

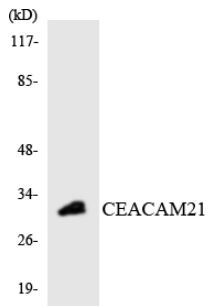


CEACAM21 Polyclonal Antibody

| | |
|----------------------------------|--|
| Catalog No | YP-Ab-16949 |
| Isotype | IgG |
| Reactivity | Human |
| Applications | WB;ELISA |
| Gene Name | CEACAM21 |
| Protein Name | Carcinoembryonic antigen-related cell adhesion molecule 21 |
| Immunogen | The antiserum was produced against synthesized peptide derived from human CEACAM21. AA range:171-220 |
| Specificity | CEACAM21 Polyclonal Antibody detects endogenous levels of CEACAM21 protein. |
| Formulation | Liquid in PBS containing 50% glycerol, 0.5% BSA and 0.02% sodium azide. |
| Source | Polyclonal, Rabbit,IgG |
| Purification | The antibody was affinity-purified from rabbit antiserum by affinity-chromatography using epitope-specific immunogen. |
| Dilution | Western Blot: 1/500 - 1/2000. ELISA: 1/10000. Not yet tested in other applications. |
| Concentration | 1 mg/ml |
| Purity | ≥90% |
| Storage Stability | -20°C/1 year |
| Synonyms | CEACAM21; Carcinoembryonic antigen-related cell adhesion molecule 21 |
| Observed Band | 32kD |
| Cell Pathway | Membrane ; Single-pass type I membrane protein . |
| Tissue Specificity | Testis, |
| Function | similarity:Belongs to the immunoglobulin superfamily. CEA family.,similarity:Contains 1 Ig-like C2-type (immunoglobulin-like) domain., |
| Background | similarity:Belongs to the immunoglobulin superfamily. CEA family.,similarity:Contains 1 Ig-like C2-type (immunoglobulin-like) domain., |
| matters needing attention | Avoid repeated freezing and thawing! |
| Usage suggestions | This product can be used in immunological reaction related experiments. For more information, please consult technical personnel. |



Products Images



Western blot analysis of the lysates from HT-29 cells using CEACAM21 antibody.